

# Horizontal Drain/Tube Attachment Device (H-TAD)

---

Secure  
Protects  
Easy-to-use

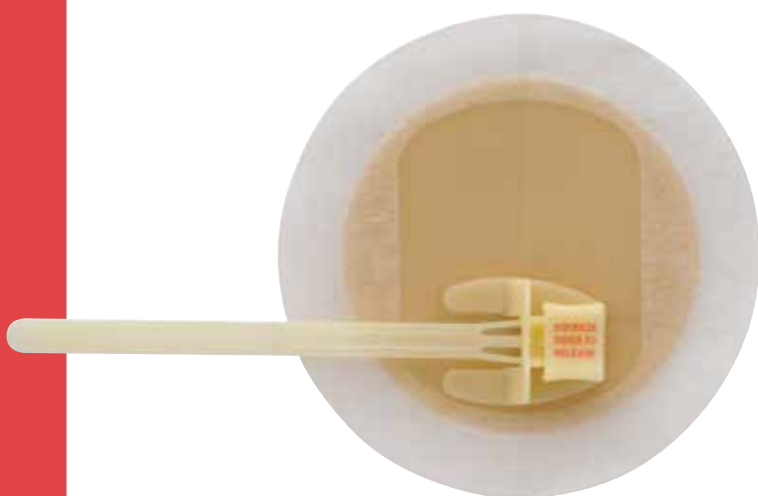


# Horizontal Drain/Tube Attachment Device (H-TAD)

The Horizontal Drain/Tube Attachment Device, is a sterile, flexible support, secured to a synthetic skin barrier with ElastaFlex™ backing. It is designed to stabilise and secure a variety of catheters, surgical drains, and tubes.

## Product Benefits:

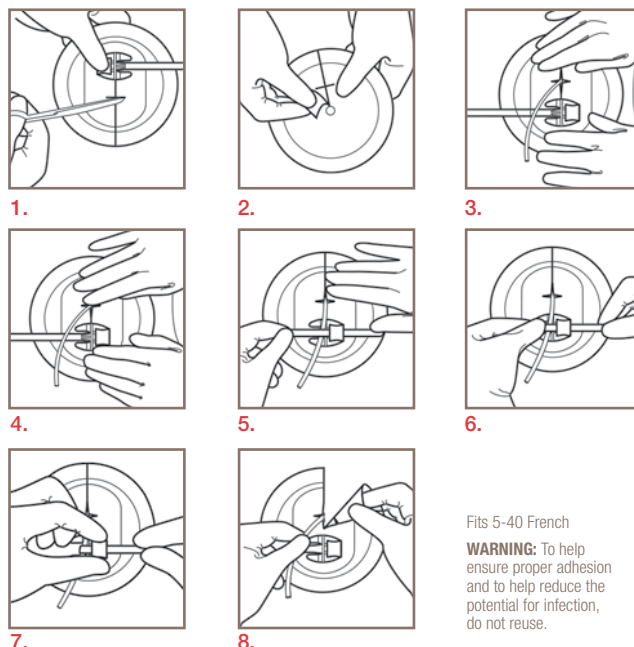
- **Secures** tube or catheter by its uniquely designed tube attachment clamping mechanism; eliminates sutures.
- **Protects** periwound skin by using today's best hydrocolloid skin care technology widely used in wound care.
- **Easy-to-use**, cost effective: easy to apply and remove; lasts up to 7 days; reduces nursing time.



## Product Features:

- Occlusive
- Absorbs Light to Moderate Exudate
- Film Backing
- FlexWear Skin Barrier
- Bacterial and Viral Barrier
- Self Adhesive
- Cut-to-Fit
- Sterile Packaging

## Instructions for use:



Fits 5-40 French  
**WARNING:** To help ensure proper adhesion and to help reduce the potential for infection, do not reuse.

### Preparing the Skin

Before applying the attachment device, wash the patient's skin with Hollister Skin Cleanser or any mild soap and water. Rinse thoroughly and dry completely. Do not use any lotions or emollients as the residue will interfere with the adhesion of the barrier.

### Applying the Attachment Device

1. Using sterile technique (where applicable), cut a cross slit (a) in barrier perpendicular to the starter slit (b). The larger the diameter of the drain/tube, the farther away from the drain/tube holder the cross slit should be made. If needed, trim the barrier for a closer fit around the tube.
2. Peel the release paper from the skin barrier on the underside of the attachment device. Do not remove the release paper from the tape border.
3. Feed the drain/tube through the starter slit to the cross slit. Position the device so that the drain/tube holder is below the tube exit site. Press the barrier to the skin firmly, but gently, and smooth it to remove all wrinkles to ensure complete adhesion. Remove the release paper from the tape border and press tape to skin.
4. Place the drain/tube on the top of the serrated strap, making sure the drain/tube is not kinked.
5. Bring the strap over the tube and push it into the strap insertion hole in the drain/tube holder.
6. Pull the strap while pushing it from the other side until it fits snugly around the drain/tube. Be careful not to dislodge the attachment device during this step. The strap should squeeze the drain/tube slightly for maximum security.

**CAUTION:** Do not pull the strap too tightly as the pressure may cause occlusion in the drain/tube. When using the Horizontal Drain/Tube Attachment Device, be sure to follow current standard clinical procedure for the placement, monitoring, and removal of percutaneous tubes.

### Removing the Attachment Device

7. Release the drain/tube from the tube holder by pushing the serrated strap backwards while squeezing the sides of the latch. Pull the strap all the way back through the latch.
8. Starting at the cross-slit opening, gently peel the barrier and tape from around the drain/tube and from the patient's skin. Hold the tube with one hand and remove the attachment device.

Stock no	Description	Quantity/Box
9781	Secures 5-40 French tubes	5

Hollister Limited  
 Rectory Court  
 42 Broad Street  
 Wokingham  
 Berkshire RG40 1AB

For more information and request FREE samples:

Tel: 0800 521 377  
 Email: samples.uk@hollister.com  
 www.hollister.com/uk